

4x4/4x6 | Softwood | **WOOD POST ANCHOR** | INSTALLATION

IMPORTANT

**!** Do not use on surfaces 30" or higher ( U.S.A.) or 600mm / 23.62" ( CAN ) or higher **UNLESS** you build according to our Engineering Reports ( See QR link below ) **AND** obtain approval by your local authority. **!** Use only Stainless Steel Screws with Aluminum Decking. Sold Separately.

1

No knots in the lower 4"- 6" ( 10-15 cm ) of the post.

**TITAN WOOD POST ANCHOR™ KIT**

(8) \*Wood Screw #14X4" T27 Drive  
(4) Lag Screw 3/8" X 5"\*

*\*Concrete screws sold separately.*

**RECOMMENDED TOOLS**

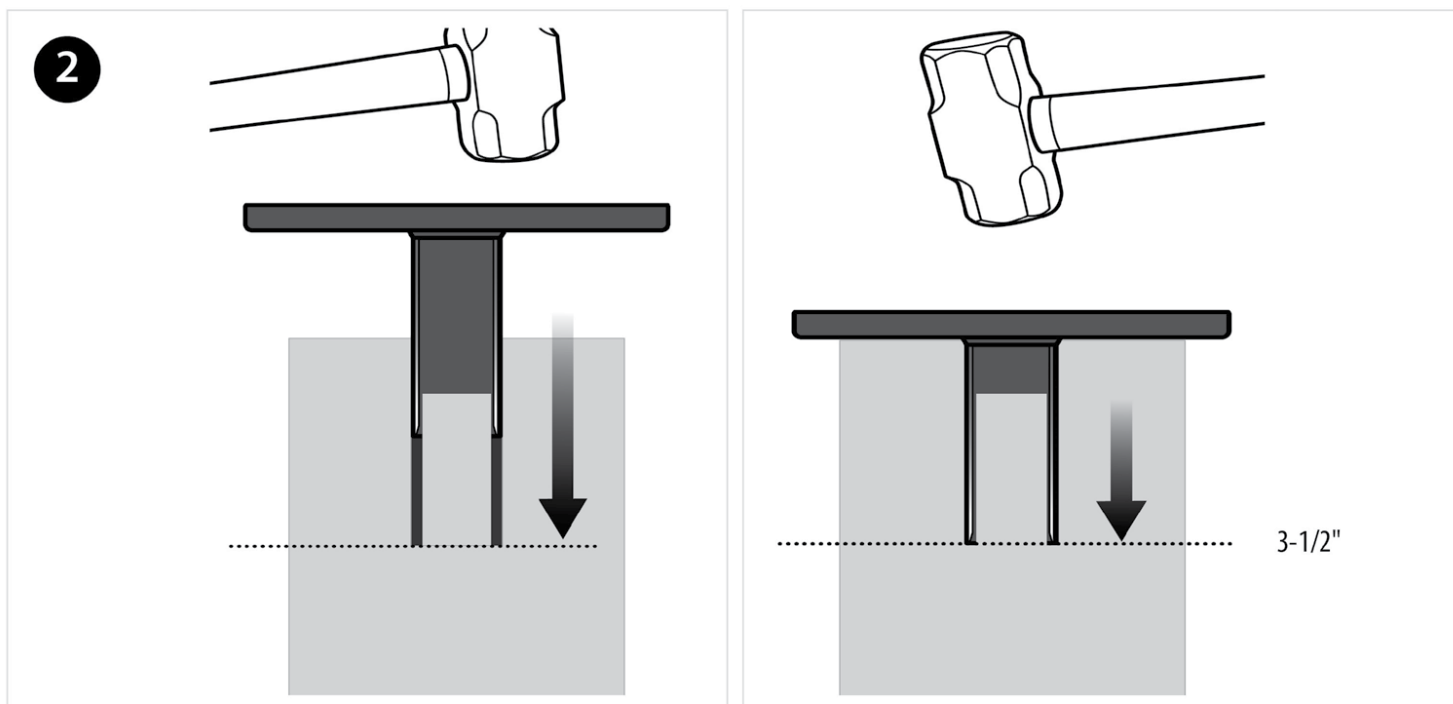
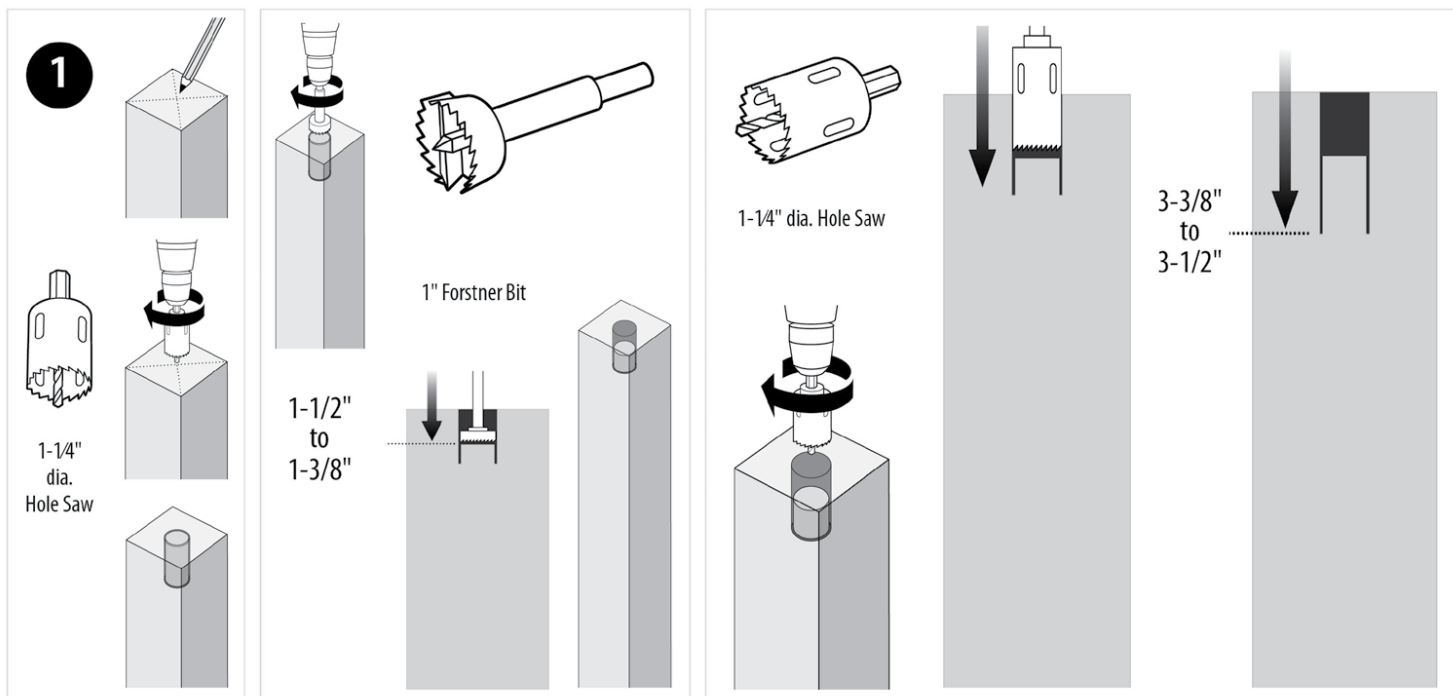

2

# 4x4/4x6 | Hardwood | WOOD POST ANCHOR | INSTALLATION

## IMPORTANT



Use only Stainless Steel Screws with Aluminum Decking. Sold Separately.



## ATTENTION

This product is not for industrial, commercial or apartment building applications. It is for private residential use only. If you wish to use this product for any residential code application including a railing, engage local professionals before beginning work: (i) to ensure that this product is appropriate for your intended use and that the structural components which this product is to be used in conjunction with are sound and that the work area is safe and free from all potential hazards including utilities and other services, (ii) to provide clarification if these warnings are unclear or you do not understand any of the information in the installation instructions for this product. Always comply with applicable building codes. Be aware that building codes may vary.

In no event shall Titan Building Products be liable for any loss or damage, direct or otherwise, which results from the improper use of this product. If for any reason Titan Building Products becomes liable for loss or damage, direct or otherwise the aggregate liability of Titan Building Products shall be limited to the retail purchase price of the products.